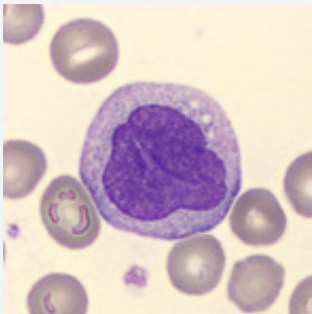


CellCase

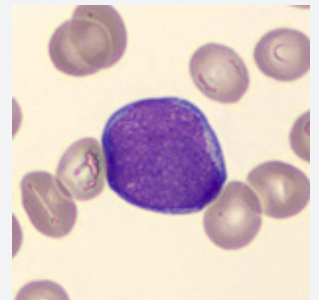
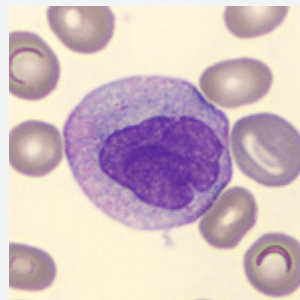
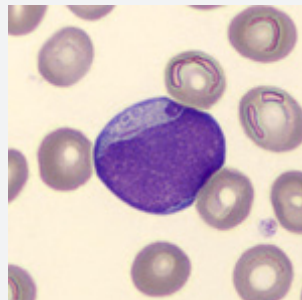
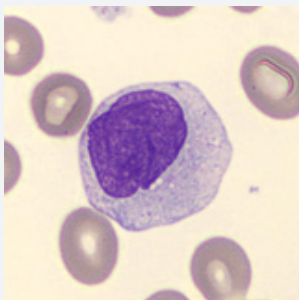
NUMBER 25



A 69-year old woman was seen at the emergency ward due to a routine check-up. The check-up showed a hemoglobin value of 7,9 g/dL.

The rheumatologist performed routine check-up, since patient received methotrexat (MTX) for her anti-CCP-positive reumatoid arthritis (RA).

Peripheral blood smear displayed the following cell classes:



What is your diagnosis?