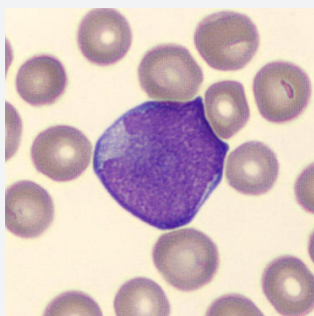


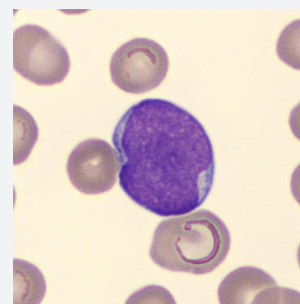
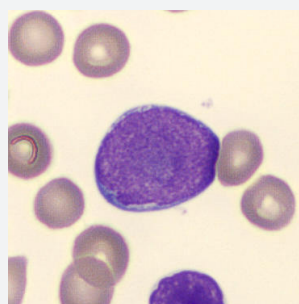
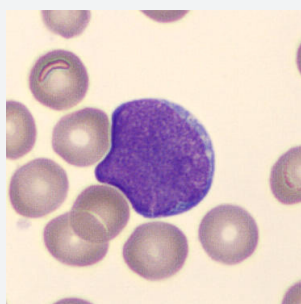
# CellCase

## NUMBER 28



A 70-year old woman was seen by the hematologist on the basis of the following blood count:  
Hemoglobin: 8,8 g/dL; Thrombocyte-count:  $13 \times 10^9/L$  and a leukocytosis of  $55 \times 10^9/L$ .

The following aberrant cells were seen in the peripheral blood smear:



## What is your diagnosis?